

About This Manual

Power Source Database User's Guide introduces the new look of the database **software** and provides the basic procedures to begin your search. In this manual, the user will learn the basic features of the **Power Source Database** software, including the new user interface. Designed to apprise users of the fundamentals quickly and easily, this manual provides step-by-step procedures to start using the most powerful **Power Source Database** available in the new guide revised October 2011.

Chapter 1: Registration

First step for using the database is to register for a subscription.

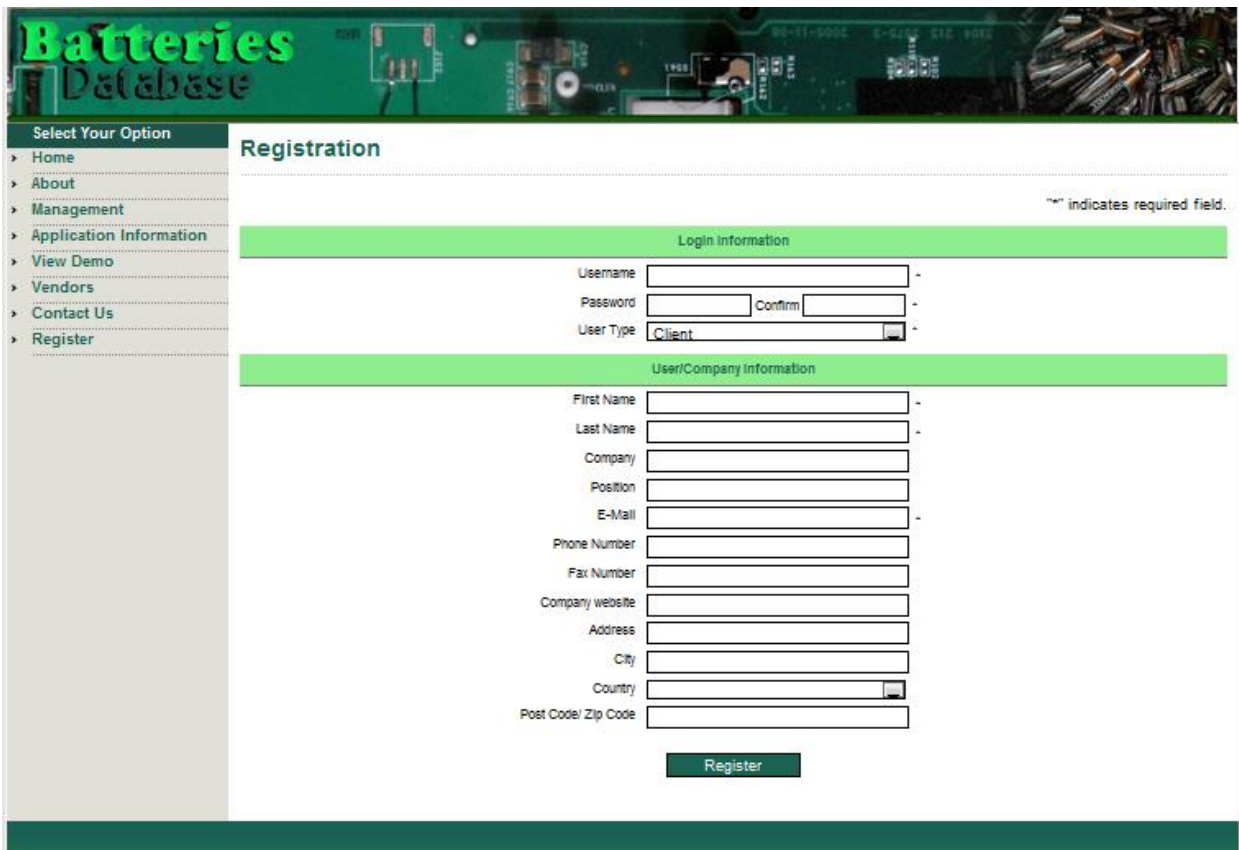
Fill in the registration form located at:

<http://www.batteriesdatabase.com/App/Common/Registration.aspx>

Send us the registration form by selecting the "Register" icon.

Within 48 hours we will send you a proforma invoice for the subscription fee for the database.

After full payment transfer has been made, we will provide you with a username and password which will allow you to use the database for a year.



The screenshot shows the 'Batteries Database' website's registration page. The header features the site's logo and a background image of a circuit board and batteries. A left sidebar menu lists navigation options: Home, About, Management, Application Information, View Demo, Vendors, Contact Us, and Register. The main content area is titled 'Registration' and includes a note that an asterisk (*) indicates a required field. The form is divided into two sections: 'Login information' and 'User/Company information'. The 'Login information' section contains fields for Username, Password, a Confirm Password field, and a User Type dropdown menu (set to 'Client'). The 'User/Company information' section contains fields for First Name, Last Name, Company, Position, E-Mail, Phone Number, Fax Number, Company website, Address, City, Country (a dropdown menu), and Post Code/Zip Code. A green 'Register' button is positioned at the bottom of the form.

Batteries Database

Select Your Option

- Home
- About
- Management
- Application Information
- View Demo
- Vendors
- Contact Us
- Register

Registration

* indicates required field.

Login information

Username

Password Confirm

User Type

User/Company information

First Name

Last Name

Company

Position

E-Mail

Phone Number

Fax Number

Company website

Address

City

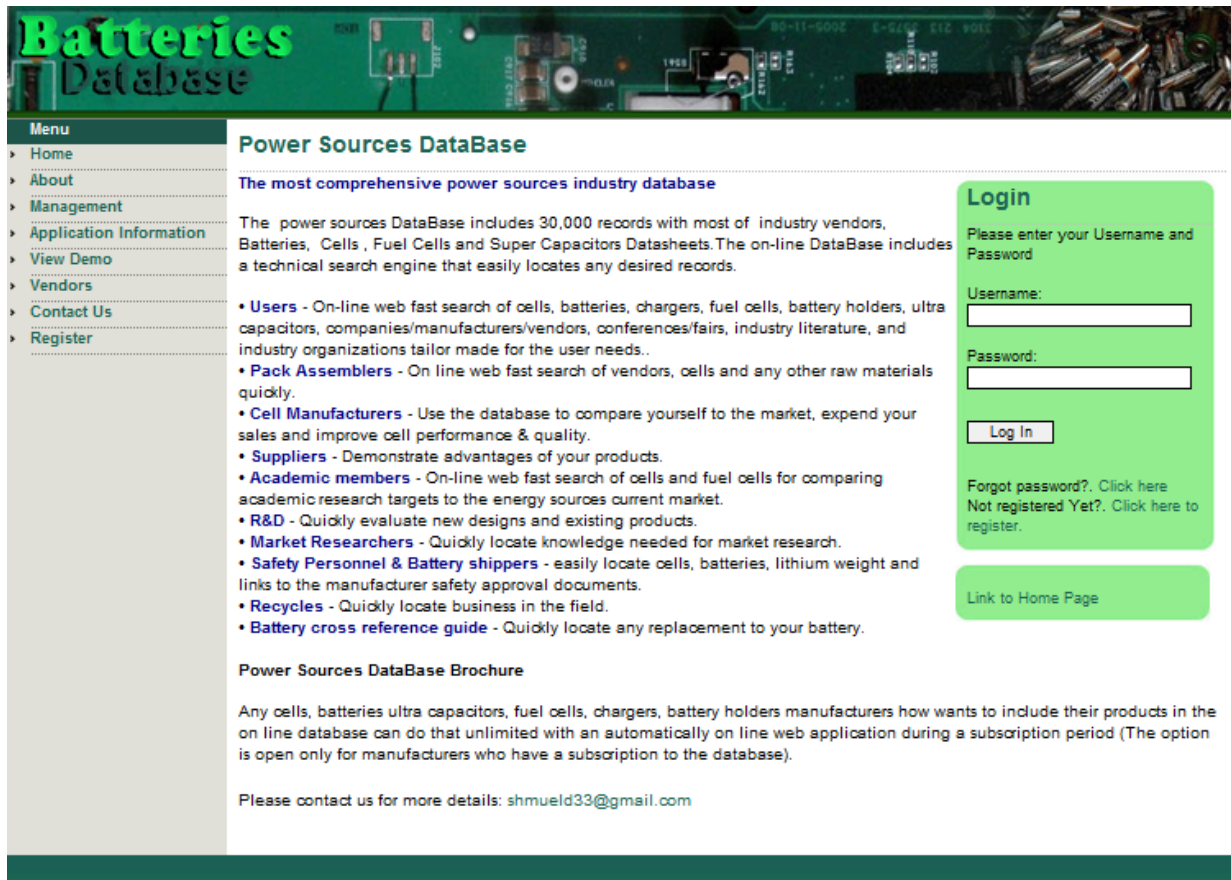
Country

Post Code/ Zip Code

Register

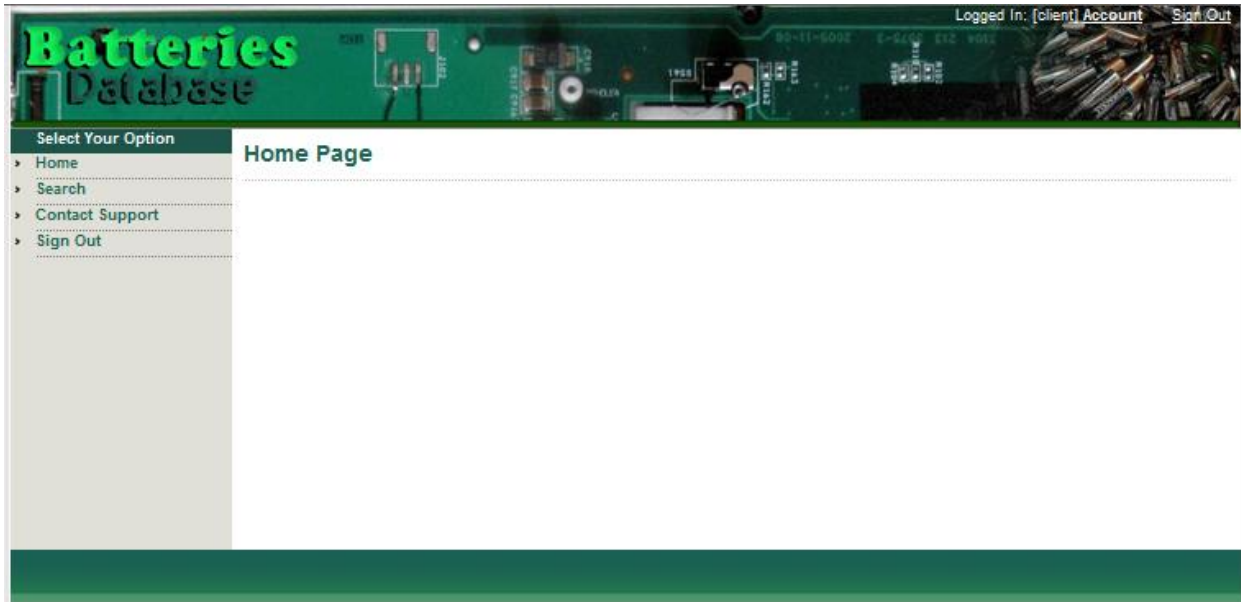
Chapter 2: Getting Started with the Power Sources Database

Enter the database by typing your username and password at the database login page and select the log in icon: <http://www.batteriesdatabase.com/App/Default.aspx>

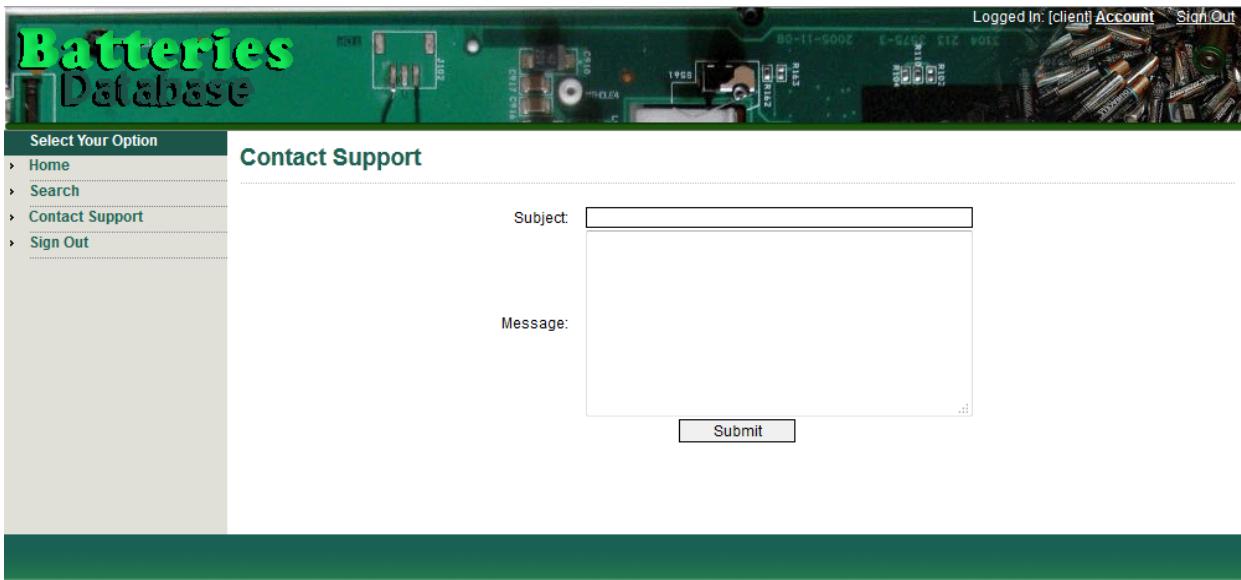
The image is a screenshot of the Batteries Database website. At the top, there is a banner with the text "Batteries Database" in a stylized green font, set against a background of a green circuit board and several AA batteries. Below the banner, the page is divided into three main sections. On the left is a vertical "Menu" with links: Home, About, Management, Application Information, View Demo, Vendors, Contact Us, and Register. The middle section is titled "Power Sources DataBase" and contains a description of the database as the "most comprehensive power sources industry database" with 30,000 records. It lists several user roles and their benefits: Users (fast search of cells, batteries, chargers, fuel cells, battery holders, ultra capacitors, companies/manufacturers/vendors, conferences/fairs, industry literature, and industry organizations tailor made for the user needs), Pack Assemblers (fast search of vendors, cells and any other raw materials quickly), Cell Manufacturers (compare yourself to the market, expend your sales and improve cell performance & quality), Suppliers (demonstrate advantages of your products), Academic members (fast search of cells and fuel cells for comparing academic research targets to the energy sources current market), R&D (quickly evaluate new designs and existing products), Market Researchers (quickly locate knowledge needed for market research), Safety Personnel & Battery shippers (easily locate cells, batteries, lithium weight and links to the manufacturer safety approval documents), Recycles (quickly locate business in the field), and Battery cross reference guide (quickly locate any replacement to your battery). Below this list is a section titled "Power Sources DataBase Brochure" which states that the database can do unlimited with an automatically on line web application during a subscription period (The option is open only for manufacturers who have a subscription to the database). At the bottom of this section, it says "Please contact us for more details: shmuel33@gmail.com". On the right side of the page, there is a green "Login" box. It contains the text "Please enter your Username and Password", followed by input fields for "Username:" and "Password:". Below these fields is a "Log In" button. At the bottom of the login box, there are links for "Forgot password? Click here" and "Not registered Yet? Click here to register.". Below the login box is a green button labeled "Link to Home Page".

You will enter the database from the Home screen:

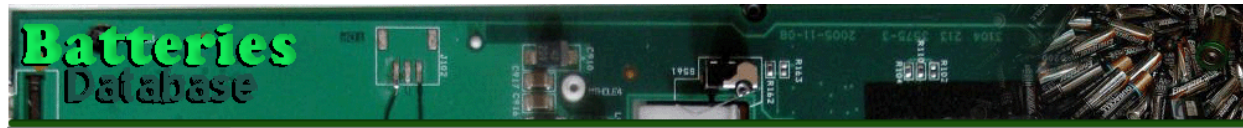
Home – still under construction.



Contact Support – To send us a request for support, please fill in the subject and the message fields and select the "Submit" icon for sending us your support request. We will respond within 24 hours.



Sign Out – Select the "Sign Out" icon to sign out from the software and return to the database Menu page.



Batteries Database

Menu

- Home
- About
- Management
- Application Information
- View Demo
- Vendors
- Contact Us
- Register

Power Sources DataBase

The most comprehensive power sources industry database

The power sources DataBase includes 30,000 records with most of industry vendors, Batteries, Cells , Fuel Cells and Super Capacitors Datasheets. The on-line DataBase includes a technical search engine that easily locates any desired records.

- Users** - On-line web fast search of cells, batteries, chargers, fuel cells, battery holders, ultra capacitors, companies/manufacturers/vendors, conferences/fairs, industry literature, and industry organizations tailor made for the user needs..
- Pack Assemblers** - On line web fast search of vendors, cells and any other raw materials quickly.
- Cell Manufacturers** - Use the database to compare yourself to the market, expend your sales and improve cell performance & quality.
- Suppliers** - Demonstrate advantages of your products.
- Academic members** - On-line web fast search of cells and fuel cells for comparing academic research targets to the energy sources current market.
- R&D** - Quickly evaluate new designs and existing products.
- Market Researchers** - Quickly locate knowledge needed for market research.
- Safety Personnel & Battery shippers** - easily locate cells, batteries, lithium weight and links to the manufacturer safety approval documents.
- Recycles** - Quickly locate business in the field.
- Battery cross reference guide** - Quickly locate any replacement to your battery.

Power Sources DataBase Brochure

Any cells, batteries ultra capacitors, fuel cells, chargers, battery holders manufacturers how wants to include their products in the on line database can do that unlimited with an automatically on line web application during a subscription period (The option is open only for manufacturers who have a subscription to the database).

Please contact us for more details: shmueld33@gmail.com

Login

Please enter your Username and Password

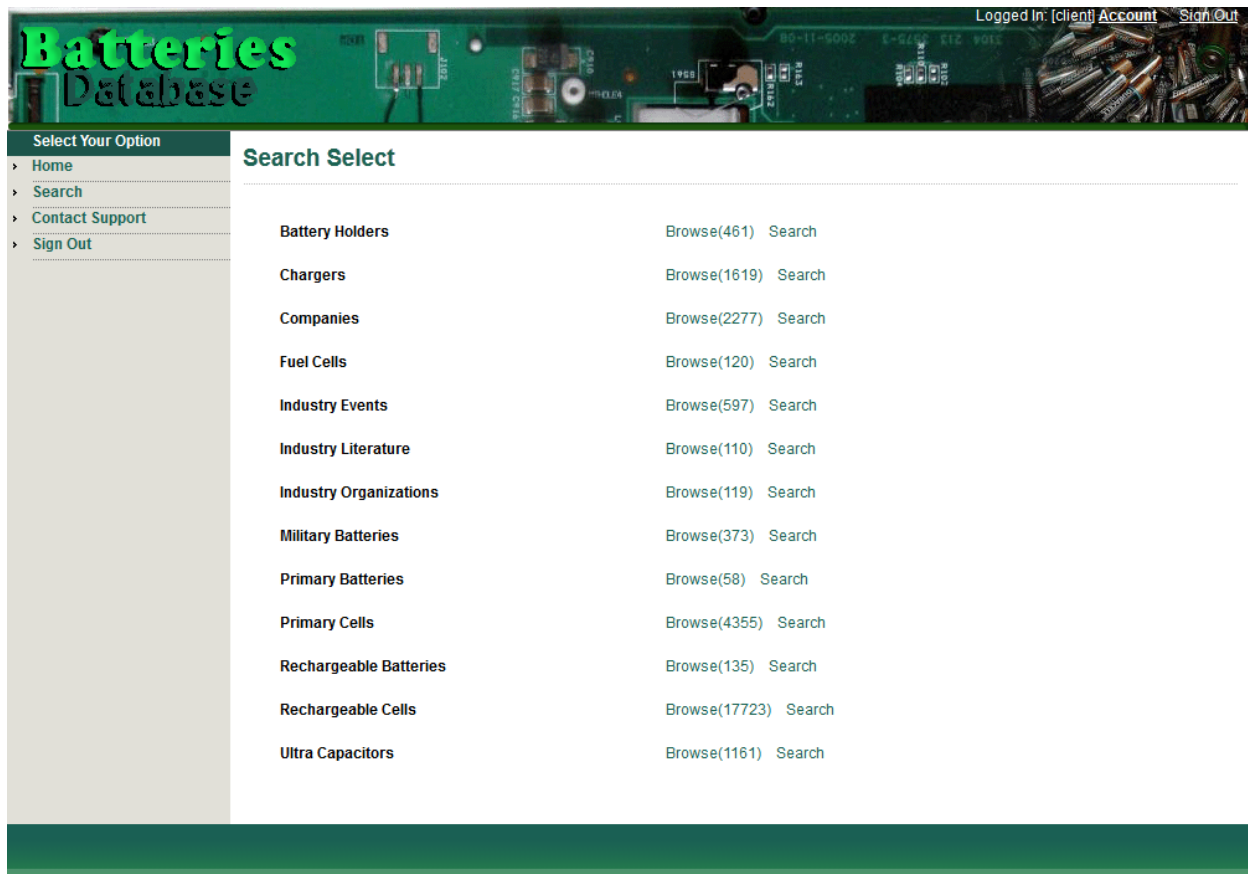
Username:

Password:

[Forgot password?](#) [Click here](#)
[Not registered Yet?](#) [Click here to register.](#)

[Link to Home Page](#)

Search – Select the "Search" icon to enter the main database search screen.



Batteries Database Logged In: (client) Account Sign Out

Select Your Option

- Home
- Search
- Contact Support
- Sign Out

Search Select

Battery Holders	Browse(461)	Search
Chargers	Browse(1619)	Search
Companies	Browse(2277)	Search
Fuel Cells	Browse(120)	Search
Industry Events	Browse(597)	Search
Industry Literature	Browse(110)	Search
Industry Organizations	Browse(119)	Search
Military Batteries	Browse(373)	Search
Primary Batteries	Browse(58)	Search
Primary Cells	Browse(4355)	Search
Rechargeable Batteries	Browse(135)	Search
Rechargeable Cells	Browse(17723)	Search
Ultra Capacitors	Browse(1161)	Search

On the left is a list of 13 database modules.

Module 1: Battery Holders

Includes 461 standard battery holders PDF data sheets and links to the web site [s](#) manufacturer's data sheets.

Module 2: Chargers

Includes [1,691](#) standard battery chargers PDF data sheets and links to the web site manufacturer's data sheets.

Module 3: Companies

Includes 2,277 industry companies classified according to address details, manufactured products, battery chemistries and fuel cell types.

Module 4: Fuel Cells

Includes 120 standard fuel cells PDF data sheets and links to the web site manufacturer's data sheets.

Module 5: Industry Events

Includes 597 future and past industry conferences/fairs/events with a PDF page about the event and links to the event web site.

Module 6: Industry Literature

Includes 110 web links to industry magazines and portals.

Module 7: Industry Organizations

Includes 119 web links to industry organizations.

Module 8: Military Batteries

Includes 373 military batteries PDF data sheets and links to the web site manufacturer's data sheets.

Module 9: Primary Batteries

Includes 58 standard primary batteries PDF data sheets and links to the web site manufacturer's data sheets. (This module is expected to be expanded to 1000 batteries within a year).

Module 10: Primary Cells

Includes [4,355](#) primary cells PDF data sheets and links to the web site manufacturer's data sheets.

Module 11: Rechargeable Batteries

Includes 135 standard primary batteries PDF data sheets and links to the web site manufacturer's data sheets. (This module is expected to be expanded to 1000 batteries within a year).

Module 12: Rechargeable Cells

Includes [17,723](#) primary cells PDF data sheets and links to the web site manufacturer's data sheets.

Module 13: Ultra Capacitors

Includes [1,161](#) ultra capacitors PDF data sheets and links to the web site manufacturer's data sheets.

Chapter 3: How to Use the "Browse" Option

The "Browse" option is the same in all modules.

Select the Primary Cells "Browse" icon and receive the primary cells table view.

Primary Cells4355 Records Found | View All Records | Back To Product List | [Print]Loaded Results in 78ms

12345678910																		
	CELL CODE	Company Name	Chemistry	Model #	Part #	Cell Status	Cell Shape	Internal Construction	Common Size	Case Polarity	Low Magnetic Signature	Seal	Case Material	Self Discharge (per year %)	Shelf Life (Yr)	Max Impedance (1kHz AC (mOhm)	Mounting	Maximum Capacity (Ah)
Select	6327	Saft	Lithium thionyl chloride - P	LSH	LSH14	Active	Cylindrical	Spiral	C	-	No	Hermetic – weld with glass to metal seal	Stain less steel	0	10	0	Flat	5.8
Select	6328	Saft	Lithium thionyl chloride - P	LSH	LSH20	Active	Cylindrical	Spiral	D	-	No	Hermetic – weld with glass to metal seal	Stain less steel	0	10	0	Flat	13
Select	6329	Saft	Lithium thionyl chloride - P	LS	LS14250	Active	Cylindrical	Bobbin	1/2AA	-	No	Hermetic – weld with glass to metal seal	Stain less steel	0	10	0	Flat	1.2
Select	6330	Saft	Lithium thionyl chloride - P	LS	LS14500	Active	Cylindrical	Bobbin	AA	-	No	Hermetic – weld with glass to metal seal	Stain less steel	0	10	0	Flat	2.6
Select	6331	Saft	Lithium thionyl chloride - P	LS	LS26500	Active	Cylindrical	Bobbin	C	-	No	Hermetic – weld with glass to metal seal	Stain less steel	0	10	0	Flat	7.7
Select	6332	Saft	Lithium thionyl chloride - P	LS	LS33600	Active	Cylindrical	Bobbin	D	-	No	Hermetic – weld with glass to metal seal	Stain less steel	0	10	0	Flat	17
Select	6333	Saft	Lithium sulfur dioxide - P	LO	LO35SX	Active	Cylindrical	Spiral	2/3C	-	No	Hermetic – weld with glass to metal seal	Stain less steel	0	10	0	Flat	2.2
Select	6334	Saft	Lithium sulfur dioxide - P	LO	LO29SHX	Active	Cylindrical	Spiral	C	-	No	Hermetic – weld with glass to metal seal	Stain less steel	0	10	0	Flat	3.75
Select	6335	Saft	Lithium sulfur dioxide - P	LO	LO40SHX	Obsolete	Cylindrical	Spiral	2/3 THIN D	-	No	Hermetic – weld with glass to metal seal	Stain less steel	0	10	0	Flat	3.5
Select	6336	Saft	Lithium sulfur dioxide - P	LO	LO30SHX	Active	Cylindrical	Spiral	Thin D	-	No	Hermetic – weld with glass to metal seal	Stain less steel	0	10	0	Flat	5.75
Select	6337	Saft	Lithium sulfur dioxide - P	LO	LO26SX	Active	Cylindrical	Spiral	D	-	No	Hermetic – weld with glass to metal seal	Stain less steel	0	10	0	Flat	7.75
Select	6338	Saft	Lithium sulfur dioxide - P	LO	LO26SHX	Active	Cylindrical	Spiral	D	-	No	Hermetic – weld with glass to metal seal	Stain less steel	0	10	0	Flat	7.5
Select	6339	Saft	Lithium sulfur dioxide - P	LO	LO25SX	Active	Cylindrical	Spiral	Fat D	-	No	Hermetic – weld with glass to metal seal	Stain less steel	0	10	0	Flat	8
Select	6340	Saft	Lithium sulfur dioxide - P	LO	LO39SHX	Active	Cylindrical	Spiral	F	-	No	Hermetic – weld with glass to metal seal	Stain less steel	0	10	0	Flat	11.5
Select	6341	Saft	Lithium sulfur dioxide - P	LO	LO52SX	Obsolete	Cylindrical	Spiral	DD	-	No	Hermetic – weld with glass to metal seal	Stain less steel	0	10	0	Flat	16
Select	6342	Eagle Picher Technologies	Lithium thionyl chloride - P	LTC	LTC30	Obsolete	Prismatic	Sandwich	Non common	+	No	Hermetic – weld with glass to metal seal	Stain less steel	2	10	0	Flat	3
Select	6343	Saft	Lithium thionyl chloride - P	LSH	LSH20HTC	Active	Cylindrical	Spiral	D	-	No	Hermetic – weld with glass to metal seal	Stain less steel	0	10	0	Flat	12
Select	6344	Saft	Lithium sulfur dioxide - P	LO	LO34SX	Active	Cylindrical	Spiral	1/3C	-	No	Hermetic – weld with glass to metal seal	Stain less steel	0	10	0	Flat	0.85
Select	6345	Electrochem	Lithium bromine chloride complex - P	BCX85	3B6050	Active	Button	Wafer	Non common	+	No	Hermetic – weld with glass to metal seal	Stain less steel	3	10	0	Pins	1
Select	6346	Electrochem	Lithium sulfuryl chloride - P	CSC93	3B6045	Active	Button	Wafer	Non common	+	No	Hermetic – weld with glass to metal seal	Stain less steel	3	10	0	Flat	1
12345678910																		

This page includes a table with 20 first records inside the primary cells module. Right scroll to see all the table columns. Select page numbers on the lower menu for scrolling between records.

Select the "View All Records" option in the upper Menu to see all records in one table.

Select the "Back to Product List" option in the upper menu for returning to the main database search operating screen.

Select the "Print" option in the upper menu for printing the table.

Selecting a column header will sort the records from A-Z and second select will sort the records from Z-A and vise versa.

Select a record inside the table by clicking the select in the left side of the record – that will transfer you to the record page view.

Go Back To Previous

Primary Cells															
Definitions				Voltages				Capacity							
Company Name	Saft	Open Circuit Voltage (V)		3.857	Nominal Voltage (V)		3.6	Maximum Capacity (Ah)		5.6					
Chemistry	Lithium thionyl chloride - P	Cut Off Voltage (V)		2	Currents			Energy Calculations							
Model #	LSH14	Standard Discharge Current (A)		0.21	Maximum Constant Discharge Current (A)		1.3	Max Energy (Wh)		0.000203188	Max Power (W)	0.000004185			
Cell Status	Active	Maximum Pulse Discharge Current (A)		2	Environmental			Volume (CC)		0.000217613	Weight Energy Density (Wh/kg)		0.00004119		
General Information				Max Discharge Temperature (C) <td>-65</td> <td>65</td> <th colspan="2">Volume Power Density (W/L)<td>0.000175980</td><th colspan="2">Weight Power Density (W/kg)<td>0.000017847</td></th></th>		-65	65	Volume Power Density (W/L) <td>0.000175980</td> <th colspan="2">Weight Power Density (W/kg)<td>0.000017847</td></th>		0.000175980	Weight Power Density (W/kg) <td>0.000017847</td>		0.000017847		
Cell Shape	Cylindrical	Internal Construction		Spiral	Min Storage Temperature (C)		0	Volume Power Density (W/L)		0.000171849	Weight Capacity Density (Ah/kg)		0.000111259		
Common Size	C	Low Magnetic Signature		No	Max Discharge Humidity (%)		0	Pulse C-Rate		0.000183909	Constant C-Rate		0.012		
Case Polarity	-	Seal		Hermetic - weld with glass to metal seal	Height (mm)		52.4	Cell Weight (Grs)		51	Lithium Weight (Grs)		1.7		
Case Material	Stain less steel	Shaft Life (Yr)		10	Width (mm)		0	Internal Vent		Yes	Internal Blocking Diode		Yes		
Self Discharge Per Year (%)	0	Mounting		Flat	Diameter (mm)		Standard	Internal Parallel Diode		No	Internal Fuse		Yes		
Max Impedance 1kHz AC (ohms)	0	Links			Rate Compliance		Yes	Internal Fuse Value (A)		0	Shut Down Separator		Unknown		
Primary Cell PDF Link	Click here to View			Rate Compliance		Yes	UL Recognition		Yes	Pass Life Tests		Yes	Transportation Status		Class 5
Primary Cell Web Site Link	Click here to View			Standards						Comments					

Select “Go Back to Previous Page” for returning to the record table view.

Scroll right to the end of the table view:

Weight Power Density (W/KG)	Volume Power Density (W/L)	Weight Capacity Density (AH/KG)	Volume Capacity Density (AH/L)	Constant C-Rate	Pulse C-Rate	Cell Weight (gr)	Lithium Weight (gr)	Internal Vent	Internal Blocking Diode	Internal Parallel Diode	Internal Fuse	Internal Fuse Value (A)	Shut Down Separator	Pass UN Tests	Transportation Status	RoHS Compliance	UL recognition	Primary Cell PDF Link	Primary Cell Web Site Link
91.7647	174.9843	113.7255	216.8608	0.2	0.3	51	1.7	Yes	No	No	Yes	5	Unknown	Yes	Class 9	Yes	Yes	View PDF	View Link
64.8	120.1245	130	240.9906	0.1	0.3	100	3.8	Yes	No	No	Yes	5	Unknown	Yes	Class 9	Yes	Yes	View PDF	View Link
14.1573	30.1465	134.8315	287.1095	0	0.1	8.9	0.3	No	No	No	No	0	Unknown	Yes	Non Restricted	Yes	Yes	View PDF	View Link
10.7784	21.5332	155.6886	311.0353	0	0.1	16.7	0.7	No	No	No	No	0	No	Yes	Non Restricted	Yes	Yes	View PDF	View Link
11.25	20.7251	160.4167	295.5241	0	0	48	2	Yes	No	No	Yes	2.2	Unknown	Yes	Class 9	Yes	Yes	View PDF	View Link
10	17.072	188.8889	322.4704	0	0	90	4.5	Yes	No	No	Yes	2.2	No	Yes	Class 9	Yes	Yes	View PDF	View Link
186.6667	296.2268	73.3333	116.3748	0.9	2.3	30	0.8	Yes	No	No	No	0	Unknown	Yes	Non Restricted	Yes	Yes	View PDF	View Link
175	269.9715	93.75	144.6276	0.7	1.6	40	1.2	Yes	No	No	No	0	Unknown	Yes	Class 9	Yes	Yes	View PDF	View Link
140	206.7474	87.5	129.2171	0.6	2.9	40	1.1	Yes	No	No	No	0	Unknown	Yes	Class 9	Yes	No	View PDF	View Link
133.3333	210.9584	91.2698	144.406	0.5	1.7	63	1.9	Yes	No	No	No	0	Unknown	Yes	Class 9	Yes	Yes	View PDF	View Link
82.3529	128.5646	91.1765	142.3394	0.3	0.6	85	2.4	Yes	No	No	No	0	Unknown	Yes	Class 9	Yes	Yes	View PDF	View Link
131.7647	205.7034	88.2353	137.7478	0.5	2	85	2.3	Yes	No	No	No	0	Unknown	Yes	Class 9	Yes	Yes	View PDF	View Link
72.9167	113.623	83.3333	129.8548	0.3	1.3	96	2.6	Yes	No	No	No	0	Unknown	Yes	Class 9	Yes	Yes	View PDF	View Link
67.2	104.8401	92	143.5311	0.3	5.2	125	3.9	Yes	No	No	No	0	Unknown	Yes	Class 9	Yes	Yes	View PDF	View Link
106.7485	168.8348	98.1595	155.2504	0.4	1.3	163	0	Yes	No	No	No	0	Unknown	Yes	Class 9	Yes	No	View PDF	View Link
7.6825	20.1774	128.041	336.2893	0	0	23.43	0.67	No	No	No	No	0	No	Yes	Non Restricted	Yes	No	View PDF	View Link
36	66.7359	120	222.4528	0.1	0.3	100	4	Yes	No	No	Yes	5	Unknown	Yes	Class 9	Yes	No	View PDF	View Link
161.1111	271.2894	47.7778	80.4513	1.2	2.3	18	0.3	Yes	No	No	No	0	Unknown	Yes	Non Restricted	Yes	Yes	View PDF	View Link
2.8462	9.5876	76.9231	259.1242	0	0	13	0.4	No	No	No	No	0	No	Yes	Non Restricted	Yes	Yes	View PDF	View Link
2.9231	9.8726	76.9231	259.8061	0	0	13	0.3	No	No	No	No	0	No	Yes	Non Restricted	Yes	Yes	View PDF	View Link

Selecting the “View PDF” of a specific cell record will transfer you to the cell PDF data sheet.

Primary lithium battery LSH 14

3.6 V Primary lithium-thionyl chloride (Li-SOCl₂)
High power
C-size spiral cell



Benefits

- High voltage response, stable during most of the lifetime of the application
- High drain/pulse capability
- Wide operating temperature range (-60°C/+85°C)
- Easy integration in compact system
- Low self-discharge rate (less than 3 % after 1 year of storage at +20°C)

Key features

- Stainless steel container
- Hermetic glass-to-metal sealing
- Built-in safety vent
- Finish with 5 A fuse
- Non-flammable electrolyte
- Underwriters Laboratories (UL) Component Recognition (File Number MH 12609)
- Compliant with IEC 60086-4
- Restricted for transport (Class 9)

Main applications

- Radiocommunication and other military applications
- Alarms and security systems
- Beacons and emergency location transmitters
- GPS
- Metering systems
- Sonobuoys
- Automotive telematics
- Pipeline inspection

Cell size reference

UM2 - R14 - C

Electrical characteristics

(typical values relative to cells stored for one year or less at +30°C max.)

Nominal capacity (at 15 mA at +20°C 2.0 V cut-off. The capacity restored by the cell varies according to current drain, temperature and cut-off)	5.8 Ah
Open circuit voltage (at +20°C)	3.67 V
Nominal voltage (at 1 mA at +20°C)	3.6 V

Pulse capability: Typically up to 3000 mA (3000 mA/10 1 second pulses, drained every 2 min at +20°C from undischarged cells with 10 µA base current, yield voltage readings above 3.0 V. The readings may vary according to the pulse characteristics, the temperature, and the cell's previous history. Firing the cell with a capacitor may be recommended in severe conditions. Consult Saft.)

Maximum recommended continuous current (to maintain cell heating within safe limits. Battery packs may imply lower level of maximum current and may request specific thermal protection. Consult Saft.)	1300 mA
---	---------

Storage (recommended) (for more severe conditions, consult Saft.)	+30°C (+85°F) max
---	-------------------

Operating temperature range (Operation at extreme T may lead to reduced capacity and lower voltage readings at the beginning of pulse. Consult Saft.)	-60°C/+85°C (-76°F/+185°F)
---	----------------------------

Physical characteristics

Diameter (max)	26.0 mm (1.02 in)
----------------	-------------------

Height (max)	50.4 mm (1.98 in)
--------------	-------------------

Typical weight	51 g (1.8 oz)
----------------	---------------

Li metal content	approx. 1.7 g
------------------	---------------

Available termination suffix	CN, CNR 3FF, 3 PF, RP DIA (AX) FL	redel tabs redel pins axial leads flying leads ...etc.
------------------------------	--	---

NATO stock number
6135 12 306 4125



Selecting “View Link” of a specific cell record will transfer you to the cell web link data sheet.

Select the “Jump to Search Results” icon in the upper menu and receive 74 cells records manufactured by Saft.

Primary Cells

74 Records Found | View All Records | Back To Search Page | [Print] Loaded Results in 88ms

1	2	3	4	5	6	7	8	9	10	11	12	13	14	15	16	17	18	19	20	21	22	23	24	25	26	27	28	29	30	31	32	33	34	35	36	37	38	39	40	41	42	43	44	45	46	47	48	49	50	51	52	53	54	55	56	57	58	59	60	61	62	63	64	65	66	67	68	69	70	71	72	73	74	75	76	77	78	79	80	81	82	83	84	85	86	87	88	89	90	91	92	93	94	95	96	97	98	99	100	101	102	103	104	105	106	107	108	109	110	111	112	113	114	115	116	117	118	119	120	121	122	123	124	125	126	127	128	129	130	131	132	133	134	135	136	137	138	139	140	141	142	143	144	145	146	147	148	149	150	151	152	153	154	155	156	157	158	159	160	161	162	163	164	165	166	167	168	169	170	171	172	173	174	175	176	177	178	179	180	181	182	183	184	185	186	187	188	189	190	191	192	193	194	195	196	197	198	199	200	201	202	203	204	205	206	207	208	209	210	211	212	213	214	215	216	217	218	219	220	221	222	223	224	225	226	227	228	229	230	231	232	233	234	235	236	237	238	239	240	241	242	243	244	245	246	247	248	249	250	251	252	253	254	255	256	257	258	259	260	261	262	263	264	265	266	267	268	269	270	271	272	273	274	275	276	277	278	279	280	281	282	283	284	285	286	287	288	289	290	291	292	293	294	295	296	297	298	299	300	301	302	303	304	305	306	307	308	309	310	311	312	313	314	315	316	317	318	319	320	321	322	323	324	325	326	327	328	329	330	331	332	333	334	335	336	337	338	339	340	341	342	343	344	345	346	347	348	349	350	351	352	353	354	355	356	357	358	359	360	361	362	363	364	365	366	367	368	369	370	371	372	373	374	375	376	377	378	379	380	381	382	383	384	385	386	387	388	389	390	391	392	393	394	395	396	397	398	399	400	401	402	403	404	405	406	407	408	409	410	411	412	413	414	415	416	417	418	419	420	421	422	423	424	425	426	427	428	429	430	431	432	433	434	435	436	437	438	439	440	441	442	443	444	445	446	447	448	449	450	451	452	453	454	455	456	457	458	459	460	461	462	463	464	465	466	467	468	469	470	471	472	473	474	475	476	477	478	479	480	481	482	483	484	485	486	487	488	489	490	491	492	493	494	495	496	497	498	499	500	501	502	503	504	505	506	507	508	509	510	511	512	513	514	515	516	517	518	519	520	521	522	523	524	525	526	527	528	529	530	531	532	533	534	535	536	537	538	539	540	541	542	543	544	545	546	547	548	549	550	551	552	553	554	555	556	557	558	559	560	561	562	563	564	565	566	567	568	569	570	571	572	573	574	575	576	577	578	579	580	581	582	583	584	585	586	587	588	589	590	591	592	593	594	595	596	597	598	599	600	601	602	603	604	605	606	607	608	609	610	611	612	613	614	615	616	617	618	619	620	621	622	623	624	625	626	627	628	629	630	631	632	633	634	635	636	637	638	639	640	641	642	643	644	645	646	647	648	649	650	651	652	653	654	655	656	657	658	659	660	661	662	663	664	665	666	667	668	669	670	671	672	673	674	675	676	677	678	679	680	681	682	683	684	685	686	687	688	689	690	691	692	693	694	695	696	697	698	699	700	701	702	703	704	705	706	707	708	709	710	711	712	713	714	715	716	717	718	719	720	721	722	723	724	725	726	727	728	729	730	731	732	733	734	735	736	737	738	739	740	741	742	743	744	745	746	747	748	749	750	751	752	753	754	755	756	757	758	759	760	761	762	763	764	765	766	767	768	769	770	771	772	773	774	775	776	777	778	779	780	781	782	783	784	785	786	787	788	789	790	791	792	793	794	795	796	797	798	799	800	801	802	803	804	805	806	807	808	809	810	811	812	813	814	815	816	817	818	819	820	821	822	823	824	825	826	827	828	829	830	831	832	833	834	835	836	837	838	839	840	841	842	843	844	845	846	847	848	849	850	851	852	853	854	855	856	857	858	859	860	861	862	863	864	865	866	867	868	869	870	871	872	873	874	875	876	877	878	879	880	881	882	883	884	885	886	887	888	889	890	891	892	893	894	895	896	897	898	899	900	901	902	903	904	905	906	907	908	909	910	911	912	913	914	915	916	917	918	919	920	921	922	923	924	925	926	927	928	929	930	931	932	933	934	935	936	937	938	939	940	941	942	943	944	945	946	947	948	949	950	951	952	953	954	955	956	957	958	959	960	961	962	963	964	965	966	967	968	969	970	971	972	973	974	975	976	977	978	979	980	981	982	983	984	985	986	987	988	989	990	991	992	993	994	995	996	997	998	999	1000	1001	1002	1003	1004	1005	1006	1007	1008	1009	1010	1011	1012	1013	1014	1015	1016	1017	1018	1019	1020	1021	1022	1023	1024	1025	1026	1027	1028	1029	1030	1031	1032	1033	1034	1035	1036	1037	1038	1039	1040	1041	1042	1043	1044	1045	1046	1047	1048	1049	1050	1051	1052	1053	1054	1055	1056	1057	1058	1059	1060	1061	1062	1063	1064	1065	1066	1067	1068	1069	1070	1071	1072	1073	1074	1075	1076	1077	1078	1079	1080	1081	1082	1083	1084	1085	1086	1087	1088	1089	1090	1091	1092	1093	1094	1095	1096	1097	1098	1099	1100	1101	1102	1103	1104	1105	1106	1107	1108	1109	1110	1111	1112	1113	1114	1115	1116	1117	1118	1119	1120	1121	1122	1123	1124	1125	1126	1127	1128	1129	1130	1131	1132	1133	1134	1135	1136	1137	1138	1139	1140	1141	1142	1143	1144	1145	1146	1147	1148	1149	1150	1151	1152	1153	1154	1155	1156	1157	1158	1159	1160	1161	1162	1163	1164	1165	1166	1167	1168	1169	1170	1171	1172	1173	1174	1175	1176	1177	1178	1179	1180	1181	1182	1183	1184	1185	1186	1187	1188	1189	1190	1191	1192	1193	1194	1195	1196	1197	1198	1199	1200	1201	1202	1203	1204	1205	1206	1207	1208	1209	1210	1211	1212	1213	1214	1215	1216	1217	1218	1219	1220	1221	1222	1223	1224	1225	1226	1227	1228	1229	1230	1231	1232	1233	1234	1235	1236	1237	1238	1239	1240	1241	1242	1243	1244	1245	1246	1247	1248	1249	1250	1251	1252	1253	1254	1255	1256	1257	1258	1259	1260	1261	1262	1263	1264	1265	1266	1267	1268	1269	1270	1271	1272	1273	1274	1275	1276	1277	1278	1279	1280	1281	1282	1283	1284	1285	1286	1287	1288	1289	1290	1291	1292	1293	1294	1295	1296	1297	1298	1299	1300	1301	1302	1303	1304	1305	1306	1307	1308	1309	1310	1311	1312	1313	1314	1315	1316	1317	1318	1319	1320	1321	1322	1323	1324	1325	1326	1327	1328	1329	1330	1331	1332	1333	1334	1335	1336	1337	1338	1339	1340	1341	1342	1343	1344	1345	1346	1347	1348	1349	1350	1351	1352	1353	1354	1355	1356	1357	1358	1359	1360	1361	1362	1363	1364	1365	1366	1367	1368	1369	1370	1371	1372	1373	1374	1375	1376	1377	1378	1379	1380	1381	1382	1383	1384	1385	1386	1387	1388	1389	1390	1391	1392	1393	1394	1395	1396	1397	1398	1399	1400	1401	1402	1403	1404	1405	1406	1407	1408	1409	1410	1411	1412	1413	1414	1415	1416	1417	1418	1419	1420	1421	1422	1423	1424	1425	1426	1427	1428	1429	1430	1431	1432	1433	1434	1435	1436	1437	1438	1439	1440	1441	1442	1443	1444	1445	1446	1447	1448	1449	1450	1451	1452	1453	1454	1455	1456	1457	1458	1459	1460	1461	1462	1463	1464	1465	1466	1467	1468	1469	1470	1471	1472	1473	1474	1475	1476	1477	1478	1479	1480	1481	1482	1483	1484
---	---	---	---	---	---	---	---	---	----	----	----	----	----	----	----	----	----	----	----	----	----	----	----	----	----	----	----	----	----	----	----	----	----	----	----	----	----	----	----	----	----	----	----	----	----	----	----	----	----	----	----	----	----	----	----	----	----	----	----	----	----	----	----	----	----	----	----	----	----	----	----	----	----	----	----	----	----	----	----	----	----	----	----	----	----	----	----	----	----	----	----	----	----	----	----	----	----	----	-----	-----	-----	-----	-----	-----	-----	-----	-----	-----	-----	-----	-----	-----	-----	-----	-----	-----	-----	-----	-----	-----	-----	-----	-----	-----	-----	-----	-----	-----	-----	-----	-----	-----	-----	-----	-----	-----	-----	-----	-----	-----	-----	-----	-----	-----	-----	-----	-----	-----	-----	-----	-----	-----	-----	-----	-----	-----	-----	-----	-----	-----	-----	-----	-----	-----	-----	-----	-----	-----	-----	-----	-----	-----	-----	-----	-----	-----	-----	-----	-----	-----	-----	-----	-----	-----	-----	-----	-----	-----	-----	-----	-----	-----	-----	-----	-----	-----	-----	-----	-----	-----	-----	-----	-----	-----	-----	-----	-----	-----	-----	-----	-----	-----	-----	-----	-----	-----	-----	-----	-----	-----	-----	-----	-----	-----	-----	-----	-----	-----	-----	-----	-----	-----	-----	-----	-----	-----	-----	-----	-----	-----	-----	-----	-----	-----	-----	-----	-----	-----	-----	-----	-----	-----	-----	-----	-----	-----	-----	-----	-----	-----	-----	-----	-----	-----	-----	-----	-----	-----	-----	-----	-----	-----	-----	-----	-----	-----	-----	-----	-----	-----	-----	-----	-----	-----	-----	-----	-----	-----	-----	-----	-----	-----	-----	-----	-----	-----	-----	-----	-----	-----	-----	-----	-----	-----	-----	-----	-----	-----	-----	-----	-----	-----	-----	-----	-----	-----	-----	-----	-----	-----	-----	-----	-----	-----	-----	-----	-----	-----	-----	-----	-----	-----	-----	-----	-----	-----	-----	-----	-----	-----	-----	-----	-----	-----	-----	-----	-----	-----	-----	-----	-----	-----	-----	-----	-----	-----	-----	-----	-----	-----	-----	-----	-----	-----	-----	-----	-----	-----	-----	-----	-----	-----	-----	-----	-----	-----	-----	-----	-----	-----	-----	-----	-----	-----	-----	-----	-----	-----	-----	-----	-----	-----	-----	-----	-----	-----	-----	-----	-----	-----	-----	-----	-----	-----	-----	-----	-----	-----	-----	-----	-----	-----	-----	-----	-----	-----	-----	-----	-----	-----	-----	-----	-----	-----	-----	-----	-----	-----	-----	-----	-----	-----	-----	-----	-----	-----	-----	-----	-----	-----	-----	-----	-----	-----	-----	-----	-----	-----	-----	-----	-----	-----	-----	-----	-----	-----	-----	-----	-----	-----	-----	-----	-----	-----	-----	-----	-----	-----	-----	-----	-----	-----	-----	-----	-----	-----	-----	-----	-----	-----	-----	-----	-----	-----	-----	-----	-----	-----	-----	-----	-----	-----	-----	-----	-----	-----	-----	-----	-----	-----	-----	-----	-----	-----	-----	-----	-----	-----	-----	-----	-----	-----	-----	-----	-----	-----	-----	-----	-----	-----	-----	-----	-----	-----	-----	-----	-----	-----	-----	-----	-----	-----	-----	-----	-----	-----	-----	-----	-----	-----	-----	-----	-----	-----	-----	-----	-----	-----	-----	-----	-----	-----	-----	-----	-----	-----	-----	-----	-----	-----	-----	-----	-----	-----	-----	-----	-----	-----	-----	-----	-----	-----	-----	-----	-----	-----	-----	-----	-----	-----	-----	-----	-----	-----	-----	-----	-----	-----	-----	-----	-----	-----	-----	-----	-----	-----	-----	-----	-----	-----	-----	-----	-----	-----	-----	-----	-----	-----	-----	-----	-----	-----	-----	-----	-----	-----	-----	-----	-----	-----	-----	-----	-----	-----	-----	-----	-----	-----	-----	-----	-----	-----	-----	-----	-----	-----	-----	-----	-----	-----	-----	-----	-----	-----	-----	-----	-----	-----	-----	-----	-----	-----	-----	-----	-----	-----	-----	-----	-----	-----	-----	-----	-----	-----	-----	-----	-----	-----	-----	-----	-----	-----	-----	-----	-----	-----	-----	-----	-----	-----	-----	-----	-----	-----	-----	-----	-----	-----	-----	-----	-----	-----	-----	-----	-----	-----	-----	-----	-----	-----	-----	-----	-----	-----	-----	-----	-----	-----	-----	-----	-----	-----	-----	-----	-----	-----	-----	-----	-----	-----	-----	-----	-----	-----	-----	-----	-----	-----	-----	-----	-----	-----	-----	-----	-----	-----	-----	-----	-----	-----	-----	-----	-----	-----	-----	-----	-----	-----	-----	-----	-----	-----	-----	-----	-----	-----	-----	-----	-----	-----	-----	-----	-----	-----	-----	-----	-----	-----	-----	-----	-----	-----	-----	-----	-----	-----	-----	-----	-----	-----	-----	-----	-----	-----	-----	-----	-----	-----	-----	-----	-----	-----	-----	-----	-----	-----	-----	-----	-----	-----	-----	-----	-----	-----	-----	-----	-----	-----	-----	-----	-----	-----	-----	-----	-----	-----	-----	-----	-----	-----	-----	-----	-----	-----	-----	-----	-----	-----	-----	-----	-----	-----	-----	-----	-----	-----	-----	-----	-----	-----	-----	-----	-----	-----	-----	-----	-----	-----	-----	-----	-----	-----	-----	-----	-----	-----	-----	-----	-----	-----	-----	-----	-----	-----	-----	-----	-----	-----	-----	-----	-----	-----	-----	-----	-----	-----	-----	-----	-----	-----	-----	-----	-----	-----	-----	-----	-----	-----	-----	-----	-----	-----	-----	-----	-----	-----	-----	-----	-----	-----	-----	-----	-----	-----	-----	-----	-----	-----	-----	-----	-----	-----	-----	-----	-----	-----	-----	-----	-----	-----	-----	-----	-----	-----	-----	-----	-----	-----	-----	-----	-----	-----	-----	-----	-----	-----	-----	-----	-----	-----	-----	-----	-----	-----	-----	-----	-----	-----	-----	-----	-----	-----	-----	-----	-----	-----	-----	-----	-----	-----	-----	-----	-----	-----	-----	-----	-----	-----	-----	-----	-----	-----	-----	-----	-----	-----	-----	-----	-----	-----	-----	-----	-----	-----	-----	-----	-----	-----	-----	-----	-----	-----	-----	-----	-----	-----	-----	-----	------	------	------	------	------	------	------	------	------	------	------	------	------	------	------	------	------	------	------	------	------	------	------	------	------	------	------	------	------	------	------	------	------	------	------	------	------	------	------	------	------	------	------	------	------	------	------	------	------	------	------	------	------	------	------	------	------	------	------	------	------	------	------	------	------	------	------	------	------	------	------	------	------	------	------	------	------	------	------	------	------	------	------	------	------	------	------	------	------	------	------	------	------	------	------	------	------	------	------	------	------	------	------	------	------	------	------	------	------	------	------	------	------	------	------	------	------	------	------	------	------	------	------	------	------	------	------	------	------	------	------	------	------	------	------	------	------	------	------	------	------	------	------	------	------	------	------	------	------	------	------	------	------	------	------	------	------	------	------	------	------	------	------	------	------	------	------	------	------	------	------	------	------	------	------	------	------	------	------	------	------	------	------	------	------	------	------	------	------	------	------	------	------	------	------	------	------	------	------	------	------	------	------	------	------	------	------	------	------	------	------	------	------	------	------	------	------	------	------	------	------	------	------	------	------	------	------	------	------	------	------	------	------	------	------	------	------	------	------	------	------	------	------	------	------	------	------	------	------	------	------	------	------	------	------	------	------	------	------	------	------	------	------	------	------	------	------	------	------	------	------	------	------	------	------	------	------	------	------	------	------	------	------	------	------	------	------	------	------	------	------	------	------	------	------	------	------	------	------	------	------	------	------	------	------	------	------	------	------	------	------	------	------	------	------	------	------	------	------	------	------	------	------	------	------	------	------	------	------	------	------	------	------	------	------	------	------	------	------	------	------	------	------	------	------	------	------	------	------	------	------	------	------	------	------	------	------	------	------	------	------	------	------	------	------	------	------	------	------	------	------	------	------	------	------	------	------	------	------	------	------	------	------	------	------	------	------	------	------	------	------	------	------	------	------	------	------	------	------	------	------	------	------	------	------	------	------	------	------	------	------	------	------	------	------	------	------	------	------	------	------	------	------	------	------	------	------	------	------	------	------	------	------	------	------	------	------	------	------	------	------	------	------	------	------	------	------	------	------	------	------	------	------	------	------	------	------	------	------	------	------	------	------	------	------	------	------	------	------	------	------	------	------	------	------	------	------	------	------	------	------	------	------	------	------

Primary Cells

Bac

Definitions				Voltages			
Company Name	=	▼	Saft	Open Circuit Voltage (V)	=	▼	
Chemistry	=	▼		Nominal Voltage (V)	=	▼	
Model #	=	▼		Cut Off Voltage (V)	=	▼	
Cell Status	=	▼					
General Information				Currents			
Cell Shape	=	▼	Internal Construction	Standard Discharge Current (A)	=	▼	
Common Size	=	▼	AA	Maximum Constant Discharge Current (A)	>	▼	1
Case Polarity	=	▼	Low Magnetic Signature	Maximum Pulse Discharge Current (A)	=	▼	
Seal	=	▼					
Case Material	=	▼		Environmental			
Self Discharge Per year (%)	=	▼	Shelf Life (Yr)	Min Discharge Temperature (C)	=	▼	
				Max Discharge Temperature (C)	=	▼	
Max Impedance 1KHz AC (mOhm)	=	▼		Min Storage Temperature (C)	=	▼	
Mounting	=	▼		Max Storage Temperature (C)	=	▼	
				Min Discharge Humidity (%)	=	▼	
				Max Discharge Humidity (%)	=	▼	
Links				Dimensions			
Primary Cell Web Site Link	=	▼		Height (mm)	=	▼	
				Diameter (mm)	=	▼	
				Width (mm)	=	▼	
				Length (mm)	=	▼	
				Standards			
				RoHS Compliance	=	▼	
				UL recognition	=	▼	

Search Results include 0 cell records as there are no cells that include these search condition parameters.

How to narrow the number of columns in the search results table to only the desired parameters?

On the upper menu of the search engine we can find the icon “Proceed to Column Selection”.

After selecting the search conditions select that icon.

You will receive a field selection page.

Primary Cells

Definitions

☒ Company Name
 ☒ Chemistry
 ☒ Model #
 ☒ Part #

General Information

☒ Cell Shape
 ☒ Internal Construction
 ☒ Common Size
 ☒ Case Polarity
 ☒ Low Magnetic Signature
 ☒ Seal
 ☒ Case Material
 ☒ Self Discharge Per year (%)
 ☒ Shelf Life (Yr)
 ☒ Max Impedance 1KHz AC (mOhm)
 ☒ Mounting

Capacity

☒ Maximum Capacity (Ah)

Voltages

☒ Open Circuit Voltage (V)
 ☒ Nominal Voltage (V)
 ☒ Cut Off Voltage (V)

Currents

☒ Standard Discharge Current (A)
 ☒ Maximum Constant Discharge Current (A)
 ☒ Maximum Pulse Discharge Current (A)

Environmental

☒ Min Discharge Temperature (C)
 ☒ Max Discharge Temperature (C)
 ☒ Min Storage Temperature (C)
 ☒ Max Storage Temperature (C)
 ☒ Min Discharge Humidity (%)
 ☒ Max Discharge Humidity (%)

Dimensions

☒ Height (mm)
 ☒ Diameter (mm)
 ☒ Width (mm)
 ☒ Length (mm)

Energy Calculations

☒ Max Energy (Wh)
 ☒ Max Power (W)
 ☒ Volume (CC)
 ☒ Weight Energy Density (Wh/Kg)
 ☒ Volume Energy Density (Wh/L)
 ☒ Weight Power Density (W/Kg)
 ☒ Volume Power Density (W/L)
 ☒ Weight Capacity Density (Ah/Kg)
 ☒ Volume Capacity Density (Ah/L)
 ☒ Constant C-Rate
 ☒ Pulse C-Rate

Volume/Weight

Select the fields you would like to see in the results table – for instance company name and chemistry:

Primary Cells

Select All Deselect All

Definitions

Company Name
Cell Status

Chemistry

Model #

Part #

General Information

Cell Shape
Low Magnetic Signature
Shelf Life (Yr)

Internal Construction
Seal
Max Impedence 1KHz AC (mOhm)

Common Size
Case Material
Mounting

Case Polarity
Self Discharge Per year (%)

Then select the “View Results” icon and receive a search results table with only the selected fields:

Primary Cells

74 Records Found | View All Records | Back To Search Page | [Print] | Loaded Results in 53ms

1	2	3	4
	Primary Cells Index #	Company Name	Chemistry
Select	6327	Saft	Lithium thionyl chloride - P
Select	6328	Saft	Lithium thionyl chloride - P
Select	6329	Saft	Lithium thionyl chloride - P
Select	6330	Saft	Lithium thionyl chloride - P
Select	6331	Saft	Lithium thionyl chloride - P
Select	6332	Saft	Lithium thionyl chloride - P
Select	6333	Saft	Lithium sulfur dioxide - P
Select	6334	Saft	Lithium sulfur dioxide - P
Select	6335	Saft	Lithium sulfur dioxide - P
Select	6336	Saft	Lithium sulfur dioxide - P
Select	6337	Saft	Lithium sulfur dioxide - P
Select	6338	Saft	Lithium sulfur dioxide - P
Select	6339	Saft	Lithium sulfur dioxide - P
Select	6340	Saft	Lithium sulfur dioxide - P
Select	6341	Saft	Lithium sulfur dioxide - P
Select	6343	Saft	Lithium thionyl chloride - P
Select	6344	Saft	Lithium sulfur dioxide - P
Select	6366	Saft	Lithium thionyl chloride - P
Select	6426	Saft	Lithium sulfur dioxide - P
Select	6427	Saft	Lithium sulfur dioxide - P

1 2 | 3 | 4 |

With the same logic use the search engine for other modules and find the results you are looking for.

Shmuel De-Leon/CEO
Shmuel De-Leon Energy, Ltd.

Mazal Arie 10, Hod-Hasharon, Israel 45309

Tel/Fax: 972-77-5010792

Mobile: 972-52-8601517

E-Mail: shmued33@gmail.com

Company web site: www.sdle.co.il

Power Sources DataBase web site: www.batteriesdatabase.com

Subscribe to our **Free [Weekly Newsletter for Batteries, Fuel Cells & the EV Industries](#)** Send mail to
shmued33@gmail.com

Advertise your business in our weekly newsletter.

Send mail to Sigalit: sd@shmuedeleon.emea.microsoftonline.com